



# FLIGHT CASES

Rugged, secure, and built for professionals - BaassFx Flight Cases feature reinforced plywood, aluminum edges, and heavy-duty latches for maximum protection. With ergonomic handles and smooth casters, they ensure easy transport and a sleek look.



# INDEX PAGE

## *Flight Cases*

1U FLIGHT CASE 15" .....	3	STUDIOMASTER AIR 6 .....	31	SM-XR-40 FLIGHT CASE .....	59
1U FLIGHT CASE 19" .....	4	STUDIOMASTER AIR 8 .....	32	VRX932 .....	60
2U 15" CROSSOVER .....	5	STUDIOMASTER AIR 12 .....	33	10U FLIGHT CASE 24" M MARK .....	61
2U 19" CROSSOVER .....	6	STUDIOMASTER AIR 16 .....	34	AHUJA AMP 10000 .....	62
3U FLIGHT CASE 15" .....	7	STUDIOMASTER AIR 18U .....	35	AHUJA AMP 500 .....	63
3U FLIGHT CASE 19" .....	8	ORB1822 .....	36	AHUJA AMP 250 .....	64
4U FLIGHT CASE 15" .....	9	ORB1822 .....	37	12U FLIGHT CASE M MARK .....	65
4U FLIGHT CASE 19" .....	10	ORB822SC .....	38	CORDLESS MIKE WITH METAL DRAWER .....	66
2U FLIGHT CASE 24" .....	11	STUDIOMASTER AQUA 14 .....	39		
3U FLIGHT CASE 24" .....	12	STUDIOMASTER PLATINUM 16FX .....	40		
3U FLIGHT CASE 27" .....	13	ALLEN & HEALTH SQ6 .....	41		
3U FLIGHT CASE 33" .....	14	ALLEN & HEALTH SQ7 .....	42		
4U FLIGHT CASE 24" .....	15	ALLEN & HEALTH QU16 .....	43		
6U FLIGHT CASE 24" .....	16	ALLEN & HEALTH QU24 .....	44		
8U FLIGHT CASE 24" .....	17	ALLEN & HEALTH QU32 .....	45		
12 CH MIXER (YAMAHA MG10 XU) .....	18	MEDAS M32 .....	46		
12 CH MIXER (YAMAHA MG12 XU) .....	19	NUMARK M6 .....	47		
16 CH MIXER (YAMAHA MG16 XU) .....	20	PIONEER XDJ RR .....	48		
MGP 24 .....	21	PIONEER XDJ RR WITH LAPTOP .....	49		
MGP 32 .....	22	PIONEER DDJ FLX 4 .....	50		
SOUNDCRAFT SIG 12 .....	23	PIONEER DDJ FLX 4 WITH LAPTOP .....	51		
SOUNDCRAFT SIG 16 .....	24	DJ MIXER CASE (CDJ350+NUMARK M6+CDJ350) .....	52		
SOUNDCRAFT SIGNATURE 22 .....	25	4 PCS PAR LIGHT .....	53		
SOUNDCRAFT SI EXPRESSION 1 .....	26	6 PCS PAR LIGHT .....	54		
SOUNDCRAFT SI EXPRESSION 2 .....	27	8 MIKE .....	55		
SOUNDCRAFT SI EXPRESSION 3 .....	28	12 MIKE .....	56		
SOUNDCRAFT LX7 24 .....	29	16 MIKE .....	57		
SOUNDCRAFT LX7 32 .....	30	14 MIKE AND CABLE FLIGHT CASE .....	58		

# 1U FLIGHT CASE 15"

*Flight Cases*

**BaassFx**<sup>®</sup>  
Go Maxx



## 1U FLIGHT CASE 15"

<b>PLYWOOD</b>	9MM CUSTOMISED PLYWOOD
<b>ALLUMINIUM L CHANNEL</b>	25X25MM
<b>8 X BALL CORNER</b>	SMALL BALL CORNER
<b>LATCH</b>	SMALL
<b>HANDLE</b>	PATTI HANDLE X 1
<b>HANDLE POSITION</b>	HORIZONTAL
<b>HINGES</b>	-
<b>3 INCH WHEEL, 2 WITH LOCK, 2 WITHOUT LOCK</b>	-
<b>RUBBER FEET</b>	4

# 1U FLIGHT CASE 19"

*Flight Cases*



## 1U FLIGHT CASE 19"

<b>PLYWOOD</b>	9MM CUSTOMISED PLYWOOD
<b>ALLUMINIUM L CHANNEL</b>	25X25MM
<b>8 X BALL CORNER</b>	SMALL BALL CORNER
<b>LATCH</b>	SMALL
<b>HANDLE</b>	PATTI HANDLE X 1
<b>HANDLE POSITION</b>	HORIZONTAL
<b>HINGES</b>	-
<b>3 INCH WHEEL, 2 WITH LOCK, 2 WITHOUT LOCK</b>	-
<b>RUBBER FEET</b>	4

# 2U 15" CROSSOVER

*Flight Cases*



## 2U 15" CROSSOVER

<b>PLYWOOD</b>	9MM CUSTOMISED PLYWOOD
<b>ALLUMINIUM L CHANNEL</b>	25X25MM
<b>8 X BALL CORNER</b>	SMALL BALL CORNER
<b>LATCH</b>	SMALL
<b>HANDLE</b>	PATTI HANDLE X 1
<b>HANDLE POSITION</b>	HORIZONTAL
<b>HINGES</b>	-
<b>3 INCH WHEEL, 2 WITH LOCK, 2 WITHOUT LOCK</b>	-
<b>RUBBER FEET</b>	4

# 2U 19" CROSSOVER

*Flight Cases*



## 2U 19" CROSSOVER

<b>PLYWOOD</b>	9MM CUSTOMISED PLYWOOD
<b>ALLUMINIUM L CHANNEL</b>	25X25MM
<b>8 X BALL CORNER</b>	SMALL BALL CORNER
<b>LATCH</b>	MEDIUM
<b>HANDLE</b>	SPRING HANDLE X 2
<b>HANDLE POSITION</b>	HORIZONTAL
<b>HINGES</b>	-
<b>3 INCH WHEEL, 2 WITH LOCK, 2 WITHOUT LOCK</b>	-
<b>RUBBER FEET</b>	4

# 3U FLIGHT CASE 15"

*Flight Cases*



## 3U FLIGHT CASE 15"

<b>PLYWOOD</b>	9MM CUSTOMISED PLYWOOD
<b>ALLUMINIUM L CHANNEL</b>	25X25MM
<b>8 X BALL CORNER</b>	MEDIUM BALL CORNER
<b>LATCH</b>	MEDIUM
<b>HANDLE</b>	SPRING HANDLE X 2
<b>HANDLE POSITION</b>	HORIZONTAL
<b>HINGES</b>	-
<b>3 INCH WHEEL, 2 WITH LOCK, 2 WITHOUT LOCK</b>	-
<b>RUBBER FEET</b>	4

# 3U FLIGHT CASE 19"

*Flight Cases*



## 3U FLIGHT CASE 19"

<b>PLYWOOD</b>	9MM CUSTOMISED PLYWOOD
<b>ALLUMINIUM L CHANNEL</b>	25X25MM
<b>8 X BALL CORNER</b>	MEDIUM BALL CORNER
<b>LATCH</b>	MEDIUM
<b>HANDLE</b>	SPRING HANDLE X 2
<b>HANDLE POSITION</b>	HORIZONTAL
<b>HINGES</b>	-
<b>3 INCH WHEEL, 2 WITH LOCK, 2 WITHOUT LOCK</b>	-
<b>RUBBER FEET</b>	4



# 4U FLIGHT CASE 15"

*Flight Cases*



## 4U FLIGHT CASE 15"

PLYWOOD	9MM CUSTOMISED PLYWOOD
ALLUMINIUM L CHANNEL	25X25MM
8 X BALL CORNER	MEDIUM BALL CORNER
LATCH	MEDIUM
HANDLE	TRAY HANDLE X 2
HANDLE POSITION	HORIZONTAL
HINGES	-
3 INCH WHEEL, 2 WITH LOCK, 2 WITHOUT LOCK	-
RUBBER FEET	4

# 4U FLIGHT CASE 19"

*Flight Cases*



## 4U FLIGHT CASE 19"

<b>PLYWOOD</b>	9MM CUSTOMISED PLYWOOD
<b>ALLUMINIUM L CHANNEL</b>	25X25MM
<b>8 X BALL CORNER</b>	MEDIUM BALL CORNER
<b>LATCH</b>	MEDIUM
<b>HANDLE</b>	TRAY HANDLE X 2
<b>HANDLE POSITION</b>	HORIZONTAL
<b>HINGES</b>	-
<b>3 INCH WHEEL, 2 WITH LOCK, 2 WITHOUT LOCK</b>	-
<b>RUBBER FEET</b>	4

# 2U FLIGHT CASE 24"

*Flight Cases*

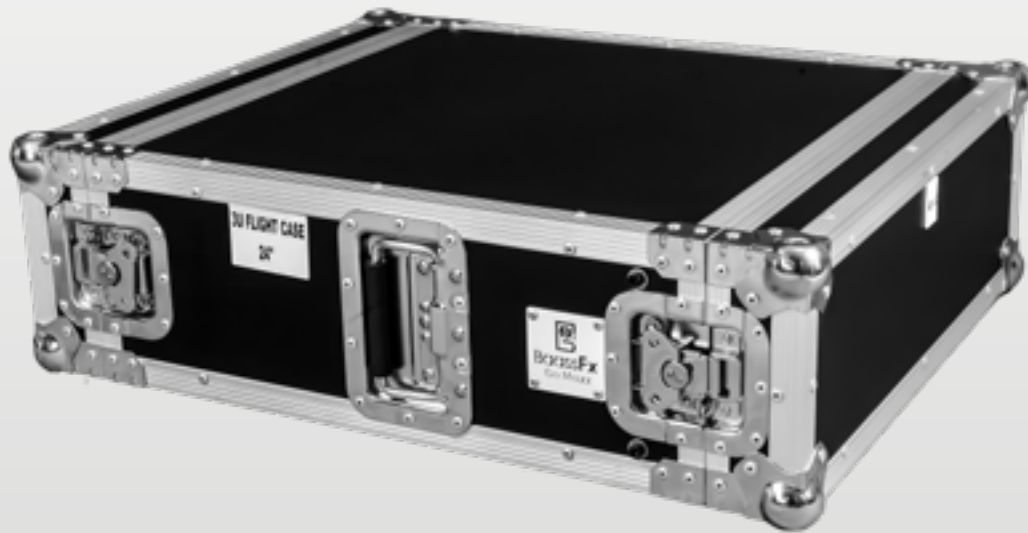


## 2U FLIGHT CASE 24"

<b>PLYWOOD</b>	9MM CUSTOMISED PLYWOOD
<b>ALLUMINIUM L CHANNEL</b>	25X25MM
<b>8 X BALL CORNER</b>	MEDIUM BALL CORNER
<b>LATCH</b>	MEDIUM
<b>HANDLE</b>	TRAY HANDLE X 2
<b>HANDLE POSITION</b>	HORIZONTAL
<b>HINGES</b>	-
<b>3 INCH WHEEL, 2 WITH LOCK, 2 WITHOUT LOCK</b>	-
<b>RUBBER FEET</b>	4

# 3U FLIGHT CASE 24"

*Flight Cases*

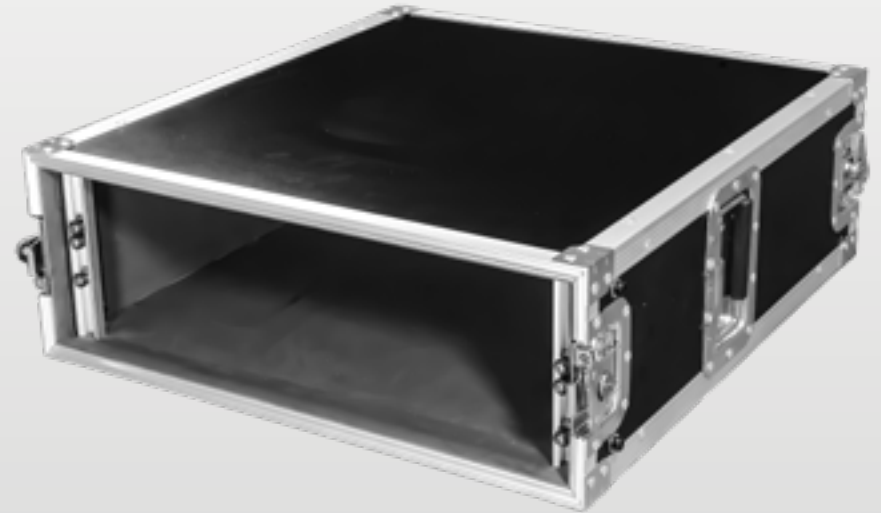
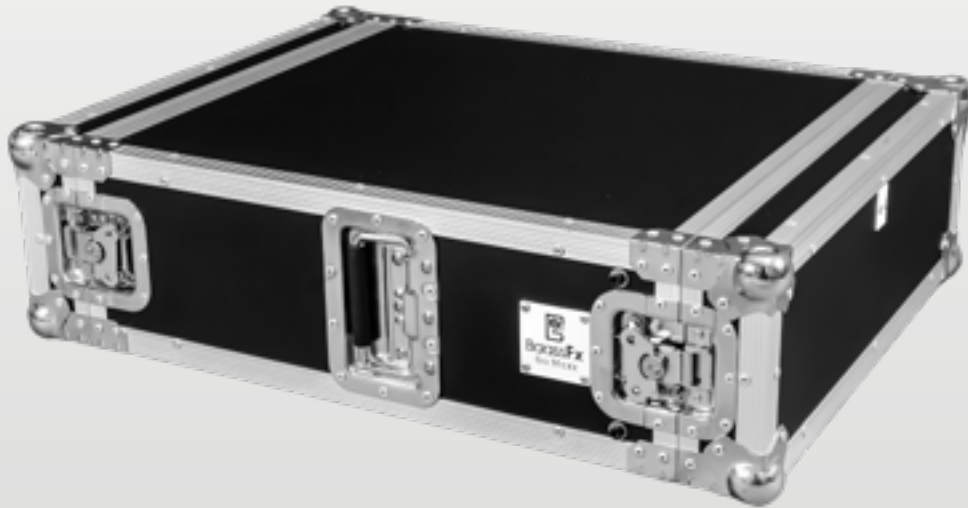


## 3U FLIGHT CASE 24"

<b>PLYWOOD</b>	9MM CUSTOMISED PLYWOOD
<b>ALLUMINIUM L CHANNEL</b>	25X25MM
<b>8 X BALL CORNER</b>	MEDIUM BALL CORNER
<b>LATCH</b>	MEDIUM
<b>HANDLE</b>	TRAY HANDLE X 2
<b>HANDLE POSITION</b>	VERTICAL
<b>HINGES</b>	-
<b>3 INCH WHEEL, 2 WITH LOCK, 2 WITHOUT LOCK</b>	-
<b>RUBBER FEET</b>	4

# 3U FLIGHT CASE 27"

*Flight Cases*



## 3U FLIGHT CASE 27"

<b>PLYWOOD</b>	9MM CUSTOMISED PLYWOOD
<b>ALLUMINIUM L CHANNEL</b>	25X25MM
<b>8 X BALL CORNER</b>	MEDIUM BALL CORNER
<b>LATCH</b>	MEDIUM
<b>HANDLE</b>	TRAY HANDLE X 2
<b>HANDLE POSITION</b>	VERTICAL
<b>HINGES</b>	-
<b>3 INCH WHEEL, 2 WITH LOCK, 2 WITHOUT LOCK</b>	-
<b>RUBBER FEET</b>	4

# 3U FLIGHT CASE 33"

*Flight Cases*



## 3U FLIGHT CASE 33"

<b>PLYWOOD</b>	9MM CUSTOMISED PLYWOOD
<b>ALLUMINIUM L CHANNEL</b>	25X25MM
<b>8 X BALL CORNER</b>	MEDIUM BALL CORNER
<b>LATCH</b>	MEDIUM
<b>HANDLE</b>	TRAY HANDLE X 4
<b>HANDLE POSITION</b>	HORIZONTAL
<b>HINGES</b>	-
<b>3 INCH WHEEL, 2 WITH LOCK, 2 WITHOUT LOCK</b>	-
<b>RUBBER FEET</b>	4

# 4U FLIGHT CASE 24"

*Flight Cases*



## 4U FLIGHT CASE 24"

<b>PLYWOOD</b>	9MM CUSTOMISED PLYWOOD
<b>ALLUMINIUM L CHANNEL</b>	25X25MM
<b>8 X BALL CORNER</b>	MEDIUM BALL CORNER
<b>LATCH</b>	MEDIUM
<b>HANDLE</b>	TRAY HANDLE X 2
<b>HANDLE POSITION</b>	VERTICAL
<b>HINGES</b>	-
<b>3 INCH WHEEL, 2 WITH LOCK, 2 WITHOUT LOCK</b>	-
<b>RUBBER FEET</b>	4

# 6U FLIGHT CASE 24"

*Flight Cases*



## 6U FLIGHT CASE 24"

PLYWOOD	9MM CUSTOMISED PLYWOOD
ALLUMINIUM L CHANNEL	27X27MM
8 X BALL CORNER	MEDIUM BALL CORNER
LATCH	MEDIUM
HANDLE	TRAY HANDLE X 4
HANDLE POSITION	HORIZONTAL
HINGES	-
3 INCH WHEEL, 2 WITH LOCK, 2 WITHOUT LOCK	4
RUBBER FEET	-



# 8U FLIGHT CASE 24"

*Flight Cases*



## 8U FLIGHT CASE 24"

<b>PLYWOOD</b>	9MM CUSTOMISED PLYWOOD
<b>ALLUMINIUM L CHANNEL</b>	27X27MM
<b>8 X BALL CORNER</b>	MEDIUM BALL CORNER
<b>LATCH</b>	MEDIUM
<b>HANDLE</b>	TRAY HANDLE X 4
<b>HANDLE POSITION</b>	HORIZONTAL
<b>HINGES</b>	-
<b>3 INCH WHEEL, 2 WITH LOCK, 2 WITHOUT LOCK</b>	4
<b>RUBBER FEET</b>	-

# 12 CH MIXER (YAMAHA MG10 XU)

*Flight Cases*

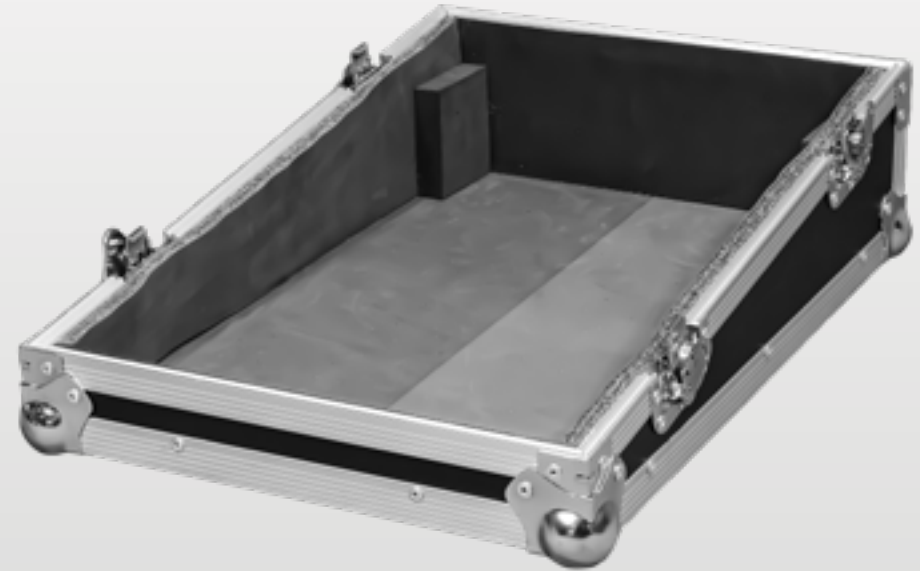


## 12 CH MIXER (YAMAHA MG10 XU)

<b>PLYWOOD</b>	9MM CUSTOMISED PLYWOOD
<b>ALLUMINIUM L CHANNEL</b>	25X25MM
<b>8 X BALL CORNER</b>	MEDIUM BALL CORNER
<b>LATCH</b>	SMALL
<b>HANDLE</b>	PLASTIC HANDLE X 1
<b>HANDLE POSITION</b>	HORIZONTAL
<b>HINGES</b>	-
<b>3 INCH WHEEL, 2 WITH LOCK, 2 WITHOUT LOCK</b>	-
<b>RUBBER FEET</b>	-

# 12 CH MIXER (YAMAHA MG12 XU)

*Flight Cases*

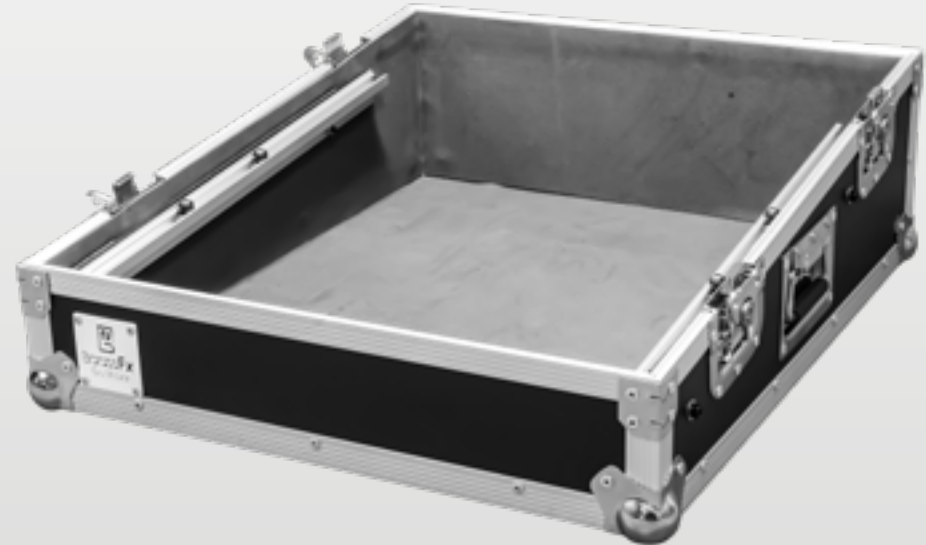


## 12 CH MIXER (YAMAHA MG12 XU)

<b>PLYWOOD</b>	9MM CUSTOMISED PLYWOOD
<b>ALLUMINIUM L CHANNEL</b>	25X25MM
<b>8 X BALL CORNER</b>	MEDIUM BALL CORNER
<b>LATCH</b>	SMALL
<b>HANDLE</b>	PATTI HANDLE X 1
<b>HANDLE POSITION</b>	HORIZONTAL
<b>HINGES</b>	-
<b>3 INCH WHEEL, 2 WITH LOCK, 2 WITHOUT LOCK</b>	-
<b>RUBBER FEET</b>	-

# 16 CH MIXER (YAMAHA MG16 XU)

*Flight Cases*



## 16 CH MIXER (YAMAHA MG16 XU)

<b>PLYWOOD</b>	9MM CUSTOMISED PLYWOOD
<b>ALLUMINIUM L CHANNEL</b>	25X25MM
<b>8 X BALL CORNER</b>	MEDIUM BALL CORNER
<b>LATCH</b>	MEDIUM
<b>HANDLE</b>	PATTI HANDLE X 1
<b>HANDLE POSITION</b>	HORIZONTAL
<b>HINGES</b>	-
<b>3 INCH WHEEL, 2 WITH LOCK, 2 WITHOUT LOCK</b>	-
<b>RUBBER FEET</b>	-

# MGP 24

*Flight Cases*

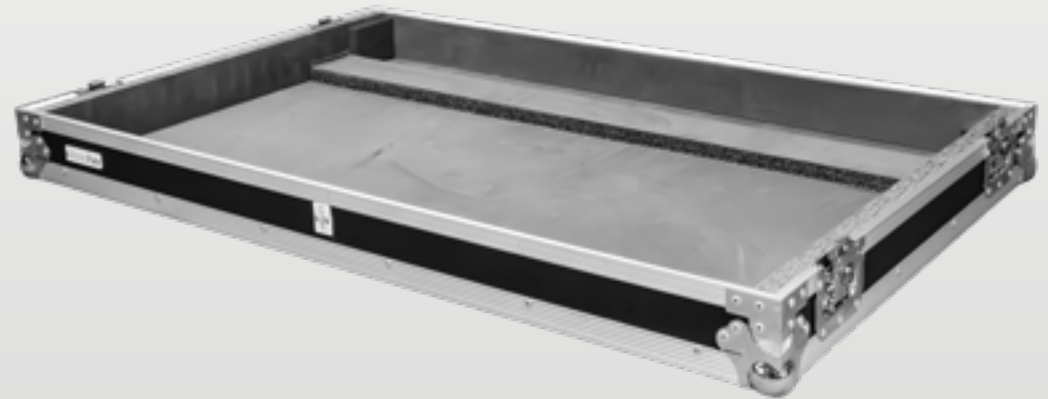


## **MGP 24**

<b>PLYWOOD</b>	9MM CUSTOMISED PLYWOOD
<b>ALLUMINIUM L CHANNEL</b>	27X27MM
<b>8 X BALL CORNER</b>	MEDIUM BALL CORNER
<b>LATCH</b>	MEDIUM
<b>HANDLE</b>	TRAY HANDLE X 2, PATTI HANDLE X 1
<b>HANDLE POSITION</b>	HORIZONTAL
<b>HINGES</b>	-
<b>3 INCH WHEEL, 2 WITH LOCK, 2 WITHOUT LOCK</b>	-
<b>RUBBER FEET</b>	-

# MGP 32

*Flight Cases*

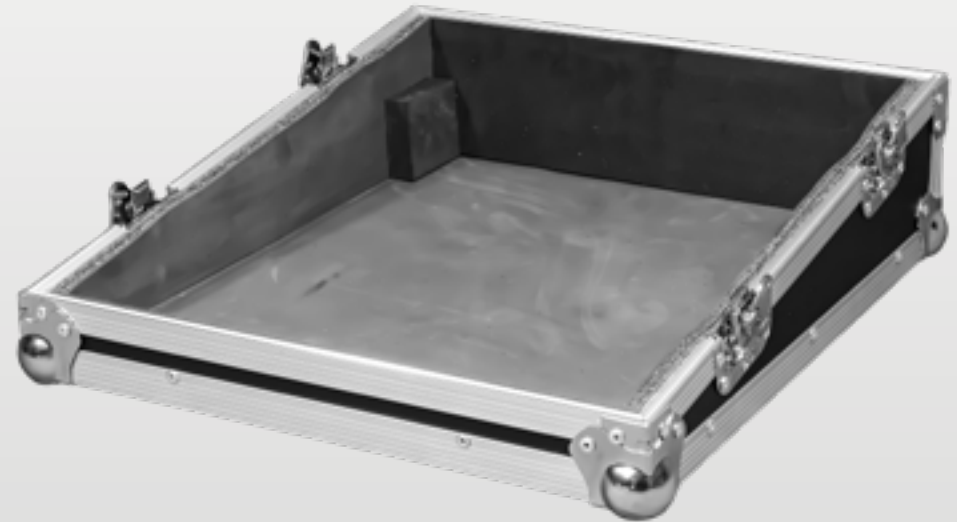


## MGP 32

<b>PLYWOOD</b>	9MM CUSTOMISED PLYWOOD
<b>ALLUMINIUM L CHANNEL</b>	27X27MM
<b>8 X BALL CORNER</b>	MEDIUM BALL CORNER
<b>LATCH</b>	MEDIUM
<b>HANDLE</b>	TRAY HANDLE X 4
<b>HANDLE POSITION</b>	HORIZONTAL
<b>HINGES</b>	-
<b>3 INCH WHEEL, 2 WITH LOCK, 2 WITHOUT LOCK</b>	-
<b>RUBBER FEET</b>	-

# SOUNDCRAFT SIG 12

*Flight Cases*



## SOUNDCRAFT SIG 12

<b>PLYWOOD</b>	9MM CUSTOMISED PLYWOOD
<b>ALLUMINIUM L CHANNEL</b>	25X25MM
<b>8 X BALL CORNER</b>	MEDIUM BALL CORNER
<b>LATCH</b>	SMALL
<b>HANDLE</b>	PATTI HANDLE X 1
<b>HANDLE POSITION</b>	HORIZONTAL
<b>HINGES</b>	-
<b>3 INCH WHEEL, 2 WITH LOCK, 2 WITHOUT LOCK</b>	-
<b>RUBBER FEET</b>	-

# SOUNDCRAFT SIG 16

*Flight Cases*



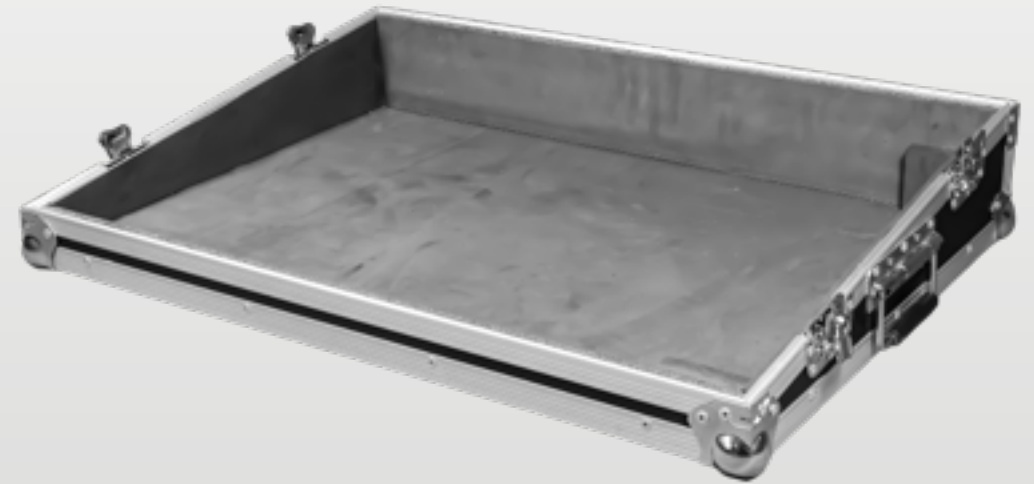
## SOUNDCRAFT SIG 16

<b>PLYWOOD</b>	9MM CUSTOMISED PLYWOOD
<b>ALLUMINIUM L CHANNEL</b>	25X25MM
<b>8 X BALL CORNER</b>	MEDIUM BALL CORNER
<b>LATCH</b>	SMALL
<b>HANDLE</b>	PATTI HANDLE X 1
<b>HANDLE POSITION</b>	HORIZONTAL
<b>HINGES</b>	-
<b>3 INCH WHEEL, 2 WITH LOCK, 2 WITHOUT LOCK</b>	-
<b>RUBBER FEET</b>	-



# SOUNDCRAFT SIGNATURE 22

*Flight Cases*



## SOUNDCRAFT SIGNATURE 22

<b>PLYWOOD</b>	9MM CUSTOMISED PLYWOOD
<b>ALLUMINIUM L CHANNEL</b>	25X25MM
<b>8 X BALL CORNER</b>	MEDIUM BALL CORNER
<b>LATCH</b>	MEDIUM
<b>HANDLE</b>	PATTI HANDLE X 1, SPRING HANDLE X2
<b>HANDLE POSITION</b>	HORIZONTAL
<b>HINGES</b>	-
<b>3 INCH WHEEL, 2 WITH LOCK, 2 WITHOUT LOCK</b>	-
<b>RUBBER FEET</b>	-

# SOUNDCRAFT SI EXPRESSION 1

*Flight Cases*



## SOUNDCRAFT SI EXPRESSION 1

<b>PLYWOOD</b>	9MM CUSTOMISED PLYWOOD
<b>ALLUMINIUM L CHANNEL</b>	27X27MM
<b>8 X BALL CORNER</b>	MEDIUM BALL CORNER
<b>LATCH</b>	MEDIUM
<b>HANDLE</b>	PATTI HANDLE X 1, TRAY HANDLE X2
<b>HANDLE POSITION</b>	HORIZONTAL
<b>HINGES</b>	-
<b>3 INCH WHEEL, 2 WITH LOCK, 2 WITHOUT LOCK</b>	-
<b>RUBBER FEET</b>	-

# SOUNDCRAFT SI EXPRESSION 2

*Flight Cases*



## **SOUNDCRAFT SI EXPRESSION 2**

<b>PLYWOOD</b>	9MM CUSTOMISED PLYWOOD
<b>ALLUMINIUM L CHANNEL</b>	27X27MM
<b>8 X BALL CORNER</b>	MEDIUM BALL CORNER
<b>LATCH</b>	MEDIUM
<b>HANDLE</b>	TRAY HANDLE X 4
<b>HANDLE POSITION</b>	HORIZONTAL
<b>HINGES</b>	-
<b>3 INCH WHEEL, 2 WITH LOCK, 2 WITHOUT LOCK</b>	-
<b>RUBBER FEET</b>	-

# SOUNDCRAFT SI EXPRESSION 3

*Flight Cases*

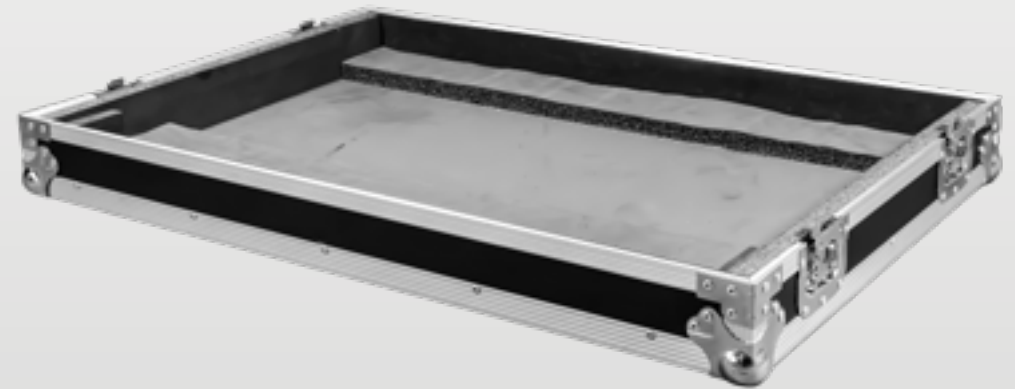


## SOUNDCRAFT SI EXPRESSION 3

<b>PLYWOOD</b>	9MM CUSTOMISED PLYWOOD
<b>ALLUMINIUM L CHANNEL</b>	27X27MM
<b>8 X BALL CORNER</b>	MEDIUM BALL CORNER
<b>LATCH</b>	MEDIUM
<b>HANDLE</b>	TRAY HANDLE X 4
<b>HANDLE POSITION</b>	HORIZONTAL
<b>HINGES</b>	-
<b>3 INCH WHEEL, 2 WITH LOCK, 2 WITHOUT LOCK</b>	-
<b>RUBBER FEET</b>	-

# SOUNDCRAFT LX7 24

*Flight Cases*



## **SOUNDCRAFT LX7 24**

<b>PLYWOOD</b>	9MM CUSTOMISED PLYWOOD
<b>ALLUMINIUM L CHANNEL</b>	27X27MM
<b>8 X BALL CORNER</b>	MEDIUM BALL CORNER
<b>LATCH</b>	MEDIUM
<b>HANDLE</b>	TRAY HANDLE X 4
<b>HANDLE POSITION</b>	HORIZONTAL
<b>HINGES</b>	-
<b>3 INCH WHEEL, 2 WITH LOCK, 2 WITHOUT LOCK</b>	-
<b>RUBBER FEET</b>	-

# SOUNDCRAFT LX7 32

*Flight Cases*

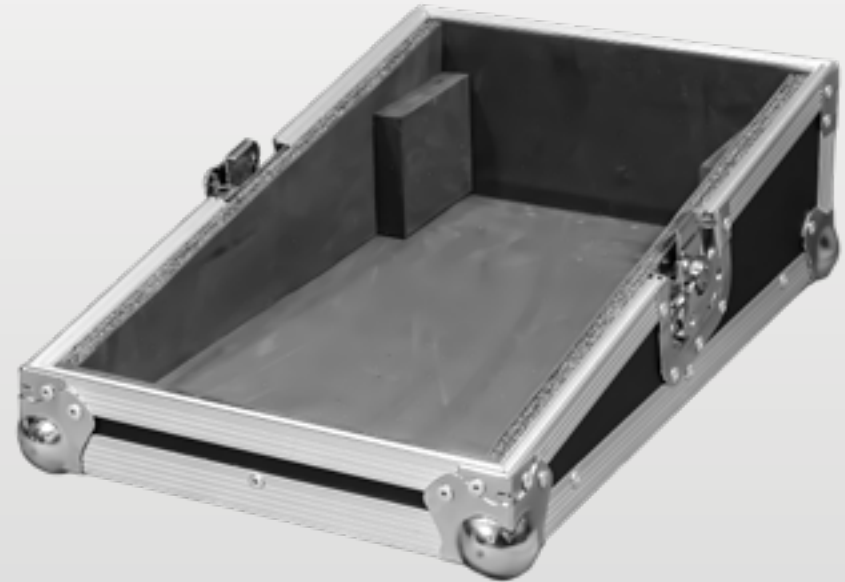


## **SOUNDCRAFT LX7 32**

<b>PLYWOOD</b>	9MM CUSTOMISED PLYWOOD
<b>ALLUMINIUM L CHANNEL</b>	27X27MM
<b>8 X BALL CORNER</b>	MEDIUM BALL CORNER
<b>LATCH</b>	MEDIUM
<b>HANDLE</b>	TRAY HANDLE X 4
<b>HANDLE POSITION</b>	HORIZONTAL
<b>HINGES</b>	-
<b>3 INCH WHEEL, 2 WITH LOCK, 2 WITHOUT LOCK</b>	-
<b>RUBBER FEET</b>	-

# STUDIOMASTER AIR 6

*Flight Cases*

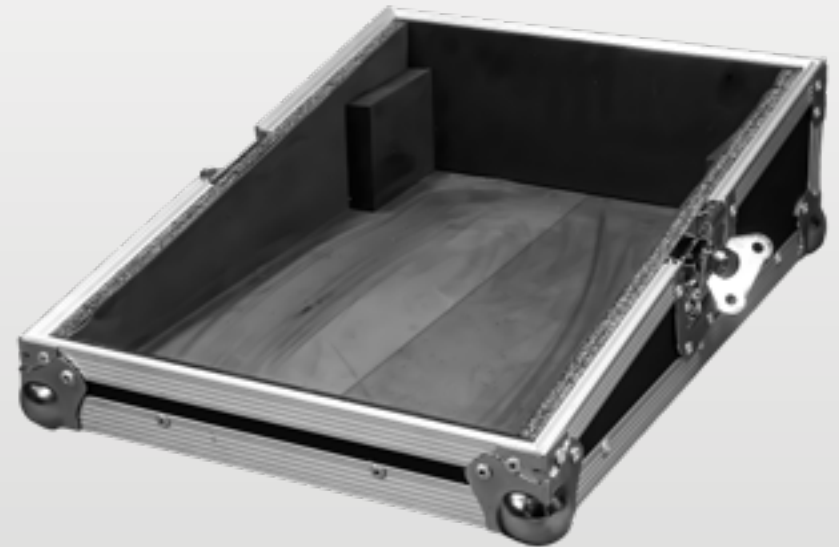


## STUDIOMASTER AIR 6

<b>PLYWOOD</b>	9MM CUSTOMISED PLYWOOD
<b>ALLUMINIUM L CHANNEL</b>	25X25MM
<b>8 X BALL CORNER</b>	MEDIUM BALL CORNER
<b>LATCH</b>	MEDIUM
<b>HANDLE</b>	PLASTIC HANDLE X 1
<b>HANDLE POSITION</b>	HORIZONTAL
<b>HINGES</b>	-
<b>3 INCH WHEEL, 2 WITH LOCK, 2 WITHOUT LOCK</b>	-
<b>RUBBER FEET</b>	-

# STUDIOMASTER AIR 8

*Flight Cases*



## STUDIOMASTER AIR 8

<b>PLYWOOD</b>	9MM CUSTOMISED PLYWOOD
<b>ALLUMINIUM L CHANNEL</b>	25X25MM
<b>8 X BALL CORNER</b>	MEDIUM BALL CORNER
<b>LATCH</b>	MEDIUM
<b>HANDLE</b>	PATTI HANDLE X 1
<b>HANDLE POSITION</b>	HORIZONTAL
<b>HINGES</b>	-
<b>3 INCH WHEEL, 2 WITH LOCK, 2 WITHOUT LOCK</b>	-
<b>RUBBER FEET</b>	-



# STUDIOMASTER AIR 12

*Flight Cases*



## STUDIOMASTER AIR 12

<b>PLYWOOD</b>	9MM CUSTOMISED PLYWOOD
<b>ALLUMINIUM L CHANNEL</b>	25X25MM
<b>8 X BALL CORNER</b>	MEDIUM BALL CORNER
<b>LATCH</b>	MEDIUM
<b>HANDLE</b>	PATTI HANDLE X 1
<b>HANDLE POSITION</b>	HORIZONTAL
<b>HINGES</b>	-
<b>3 INCH WHEEL, 2 WITH LOCK, 2 WITHOUT LOCK</b>	-
<b>RUBBER FEET</b>	-

# STUDIOMASTER AIR 16

*Flight Cases*

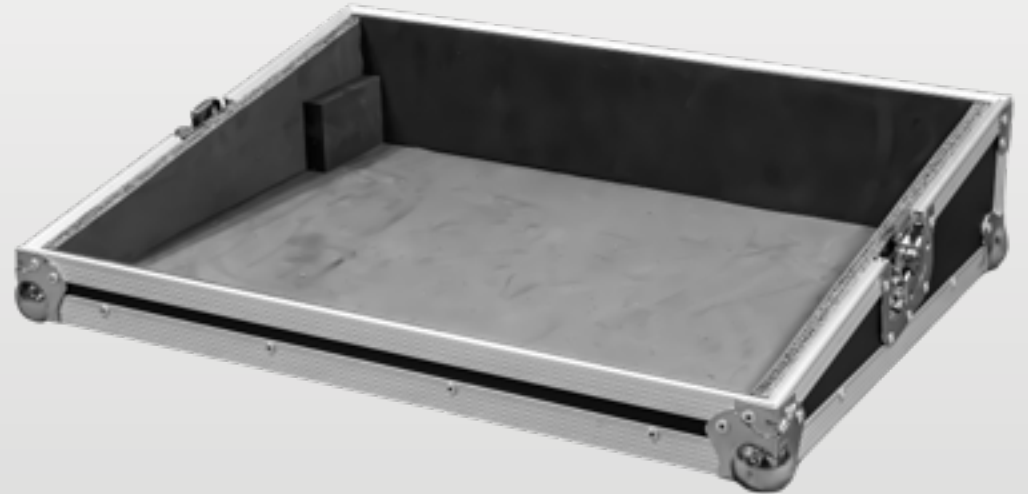


## STUDIOMASTER AIR 16

<b>PLYWOOD</b>	9MM CUSTOMISED PLYWOOD
<b>ALLUMINIUM L CHANNEL</b>	25X25MM
<b>8 X BALL CORNER</b>	MEDIUM BALL CORNER
<b>LATCH</b>	MEDIUM
<b>HANDLE</b>	PATTI HANDLE X 1
<b>HANDLE POSITION</b>	HORIZONTAL
<b>HINGES</b>	-
<b>3 INCH WHEEL, 2 WITH LOCK, 2 WITHOUT LOCK</b>	-
<b>RUBBER FEET</b>	-

# STUDIOMASTER AIR 18U

*Flight Cases*

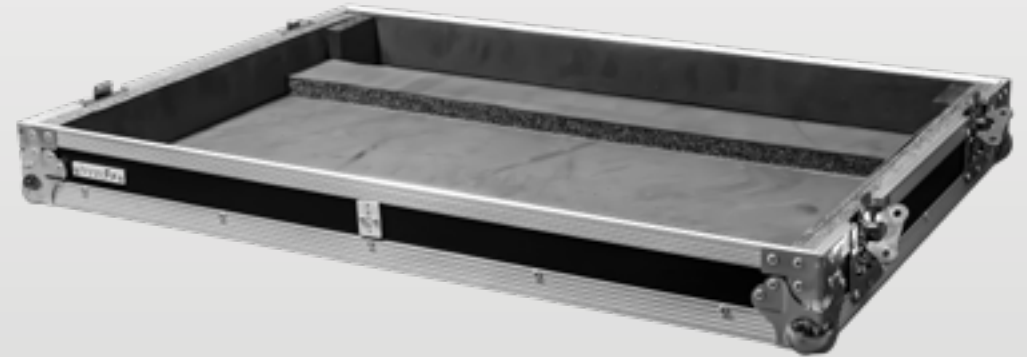


## STUDIOMASTER AIR 18U

PLYWOOD	9MM CUSTOMISED PLYWOOD
ALLUMINIUM L CHANNEL	25X25MM
8 X BALL CORNER	MEDIUM BALL CORNER
LATCH	MEDIUM
HANDLE	PATTI HANDLE X 1
HANDLE POSITION	HORIZONTAL
HINGES	-
3 INCH WHEEL, 2 WITH LOCK, 2 WITHOUT LOCK	-
RUBBER FEET	-

# ORB1822

*Flight Cases*

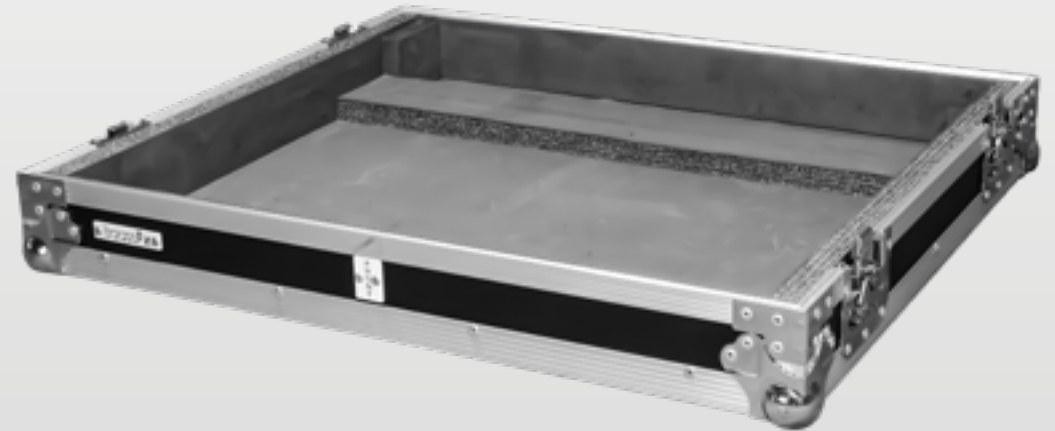


## ORB1822

<b>PLYWOOD</b>	9MM CUSTOMISED PLYWOOD
<b>ALLUMINIUM L CHANNEL</b>	27X27MM
<b>8 X BALL CORNER</b>	MEDIUM BALL CORNER
<b>LATCH</b>	MEDIUM
<b>HANDLE</b>	TRAY HANDLE X 2
<b>HANDLE POSITION</b>	HORIZONTAL
<b>HINGES</b>	-
<b>3 INCH WHEEL, 2 WITH LOCK, 2 WITHOUT LOCK</b>	-
<b>RUBBER FEET</b>	-

# ORB1222

*Flight Cases*

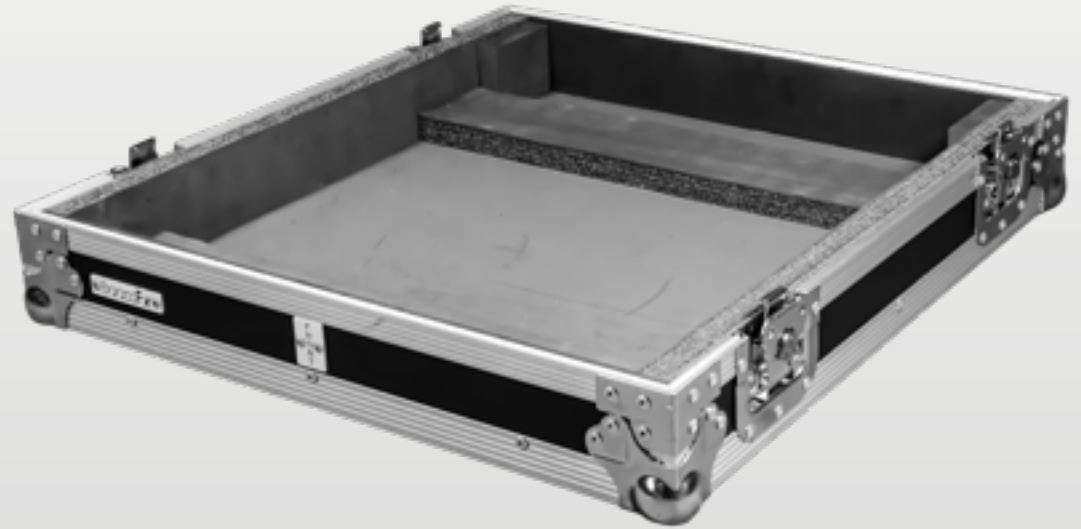


## ORB1222

<b>PLYWOOD</b>	9MM CUSTOMISED PLYWOOD
<b>ALLUMINIUM L CHANNEL</b>	27X27MM
<b>8 X BALL CORNER</b>	MEDIUM BALL CORNER
<b>LATCH</b>	MEDIUM
<b>HANDLE</b>	TRAY HANDLE X 2
<b>HANDLE POSITION</b>	HORIZONTAL
<b>HINGES</b>	-
<b>3 INCH WHEEL, 2 WITH LOCK, 2 WITHOUT LOCK</b>	-
<b>RUBBER FEET</b>	-

# ORB822SC

*Flight Cases*



## ORB822SC

<b>PLYWOOD</b>	9MM CUSTOMISED PLYWOOD
<b>ALLUMINIUM L CHANNEL</b>	27X27MM
<b>8 X BALL CORNER</b>	MEDIUM BALL CORNER
<b>LATCH</b>	MEDIUM
<b>HANDLE</b>	TRAY HANDLE X 2
<b>HANDLE POSITION</b>	HORIZONTAL
<b>HINGES</b>	-
<b>3 INCH WHEEL, 2 WITH LOCK, 2 WITHOUT LOCK</b>	-
<b>RUBBER FEET</b>	-

# STUDIOMASTER AQUA 14

*Flight Cases*

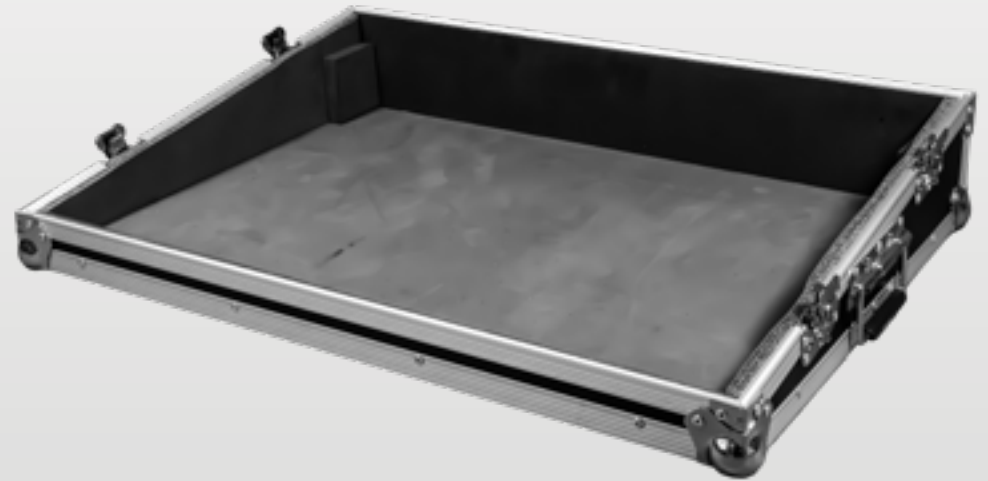


## STUDIOMASTER AQUA 14

<b>PLYWOOD</b>	9MM CUSTOMISED PLYWOOD
<b>ALLUMINIUM L CHANNEL</b>	25X25MM
<b>8 X BALL CORNER</b>	MEDIUM BALL CORNER
<b>LATCH</b>	MEDIUM
<b>HANDLE</b>	TRAY HANDLE X 1
<b>HANDLE POSITION</b>	HORIZONTAL
<b>HINGES</b>	-
<b>3 INCH WHEEL, 2 WITH LOCK, 2 WITHOUT LOCK</b>	-
<b>RUBBER FEET</b>	-

# STUDIOMASTER PLATINUM 16FX

*Flight Cases*



## STUDIOMASTER PLATINUM 16FX

<b>PLYWOOD</b>	9MM CUSTOMISED PLYWOOD
<b>ALLUMINIUM L CHANNEL</b>	25X25MM
<b>8 X BALL CORNER</b>	MEDIUM BALL CORNER
<b>LATCH</b>	MEDIUM
<b>HANDLE</b>	PATTI HANDLE X 1, SPRING HANDLE X 2
<b>HANDLE POSITION</b>	HORIZONTAL
<b>HINGES</b>	-
<b>3 INCH WHEEL, 2 WITH LOCK, 2 WITHOUT LOCK</b>	-
<b>RUBBER FEET</b>	-



# ALLEN & HEALTH SQ6

*Flight Cases*

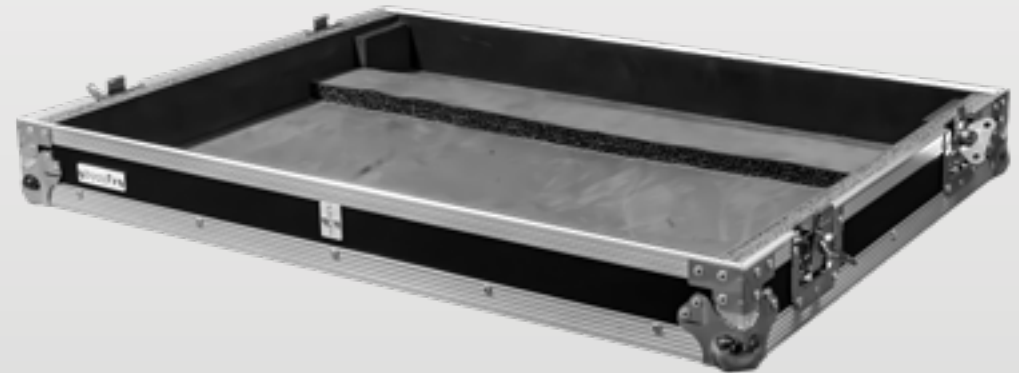


## ALLEN & HEALTH SQ6

PLYWOOD	9MM CUSTOMISED PLYWOOD
ALLUMINIUM L CHANNEL	27X27MM
8 X BALL CORNER	MEDIUM BALL CORNER
LATCH	MEDIUM
HANDLE	TRAY HANDLE X 2
HANDLE POSITION	HORIZONTAL
HINGES	-
3 INCH WHEEL, 2 WITH LOCK, 2 WITHOUT LOCK	-
RUBBER FEET	-

# ALLEN & HEALTH SQ7

*Flight Cases*

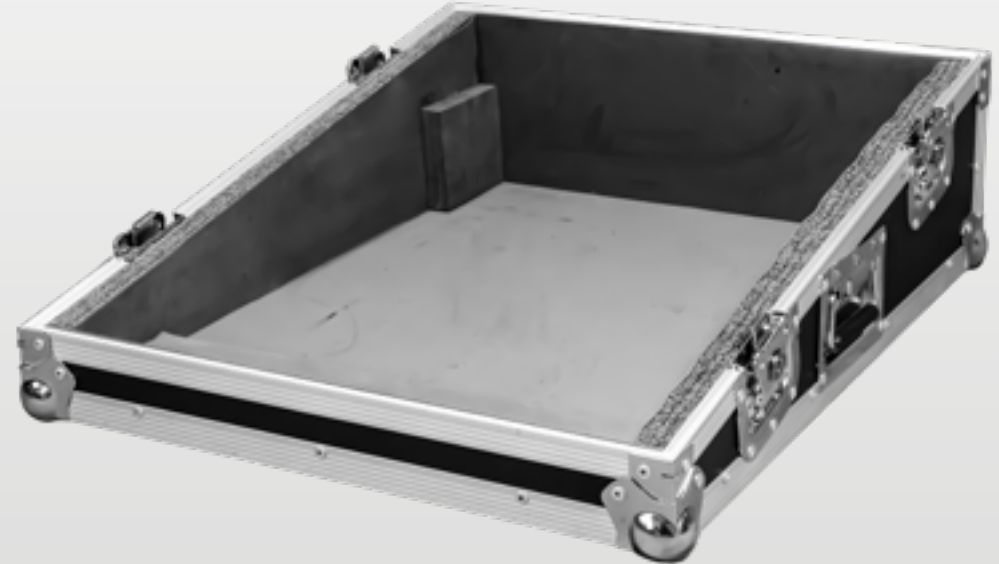


## ALLEN & HEALTH SQ7

PLYWOOD	9MM CUSTOMISED PLYWOOD
ALLUMINIUM L CHANNEL	27X27MM
8 X BALL CORNER	MEDIUM BALL CORNER
LATCH	MEDIUM
HANDLE	TRAY HANDLE X 4
HANDLE POSITION	HORIZONTAL
HINGES	-
3 INCH WHEEL, 2 WITH LOCK, 2 WITHOUT LOCK	-
RUBBER FEET	-

# ALLEN & HEALTH QU16

*Flight Cases*

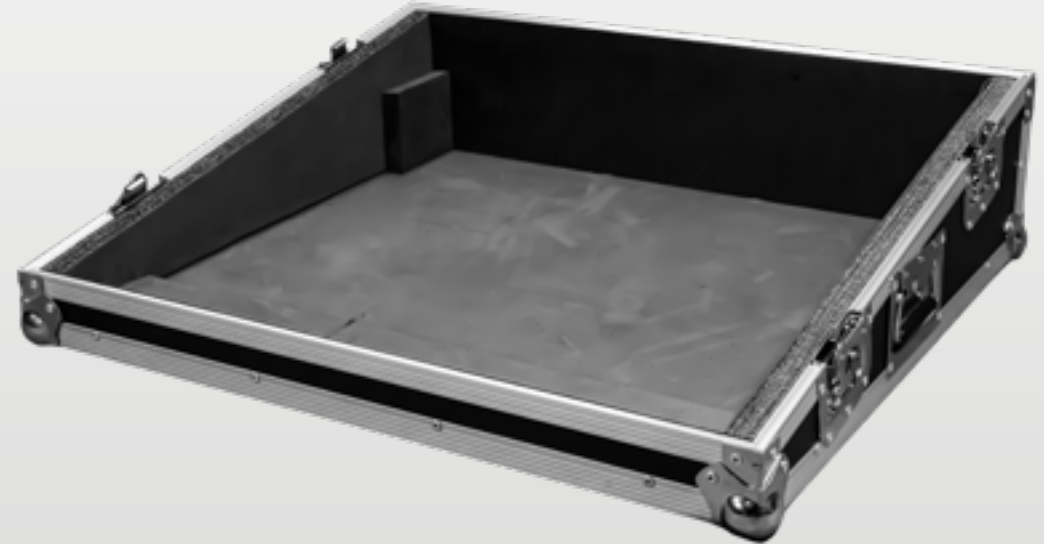


## ALLEN & HEALTH QU16

PLYWOOD	9MM CUSTOMISED PLYWOOD
ALLUMINIUM L CHANNEL	27X27MM
8 X BALL CORNER	MEDIUM BALL CORNER
LATCH	MEDIUM
HANDLE	PATTI HANDLE X 1, TRAY HANDLE X2
HANDLE POSITION	HORIZONTAL
HINGES	-
3 INCH WHEEL, 2 WITH LOCK, 2 WITHOUT LOCK	-
RUBBER FEET	-

# ALLEN & HEALTH QU24

*Flight Cases*

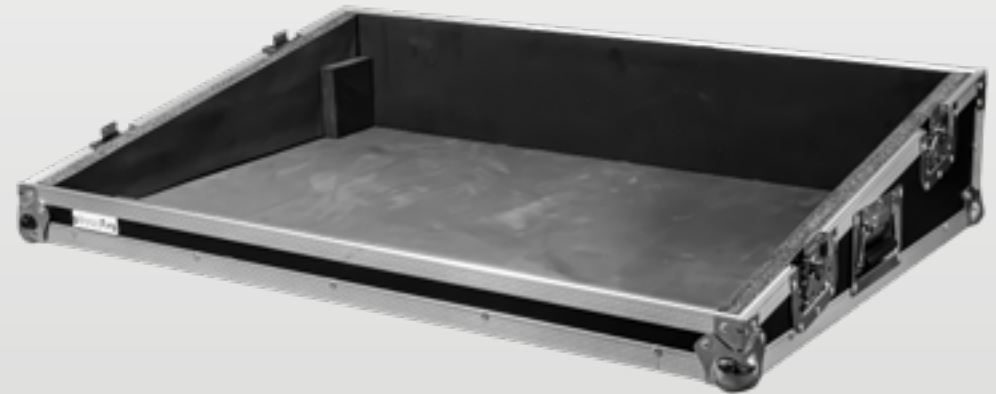


## ALLEN & HEALTH QU24

PLYWOOD	9MM CUSTOMISED PLYWOOD
ALLUMINIUM L CHANNEL	27X27MM
8 X BALL CORNER	MEDIUM BALL CORNER
LATCH	MEDIUM
HANDLE	TRAY HANDLE X 4
HANDLE POSITION	HORIZONTAL
HINGES	-
3 INCH WHEEL, 2 WITH LOCK, 2 WITHOUT LOCK	-
RUBBER FEET	-

# ALLEN & HEALTH QU32

*Flight Cases*

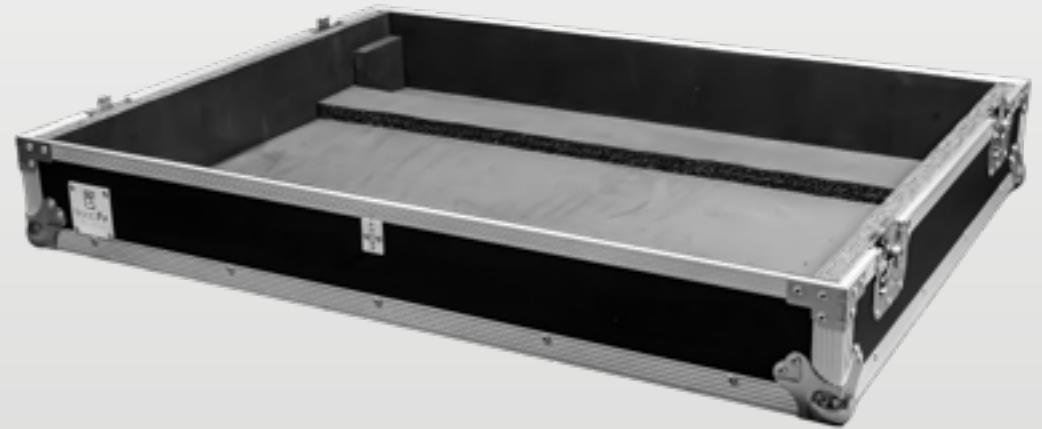


## ALLEN & HEALTH QU32

PLYWOOD	9MM CUSTOMISED PLYWOOD
ALLUMINIUM L CHANNEL	27X27MM
8 X BALL CORNER	MEDIUM BALL CORNER
LATCH	MEDIUM
HANDLE	TRAY HANDLE X 4
HANDLE POSITION	HORIZONTAL
HINGES	-
3 INCH WHEEL, 2 WITH LOCK, 2 WITHOUT LOCK	-
RUBBER FEET	-

# MEDAS M32

*Flight Cases*



## **MEDAS M32**

<b>PLYWOOD</b>	9MM CUSTOMISED PLYWOOD
<b>ALLUMINIUM L CHANNEL</b>	27X27MM
<b>8 X BALL CORNER</b>	MEDIUM BALL CORNER
<b>LATCH</b>	MEDIUM
<b>HANDLE</b>	TRAY HANDLE X 4
<b>HANDLE POSITION</b>	HORIZONTAL
<b>HINGES</b>	-
<b>3 INCH WHEEL, 2 WITH LOCK, 2 WITHOUT LOCK</b>	-
<b>RUBBER FEET</b>	-

# NUMARK M6

*Flight Cases*

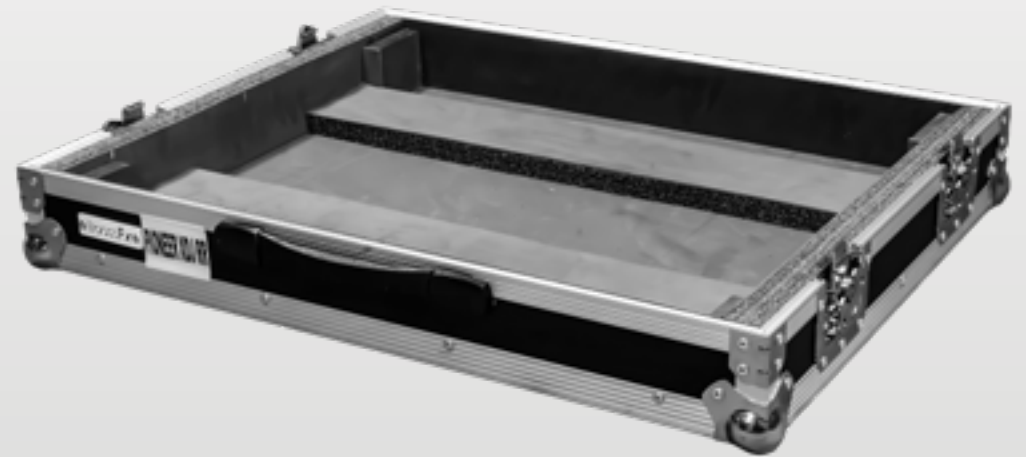


## NUMARK M6

<b>PLYWOOD</b>	9MM CUSTOMISED PLYWOOD
<b>ALLUMINIUM L CHANNEL</b>	25X25MM
<b>8 X BALL CORNER</b>	MEDIUM BALL CORNER
<b>LATCH</b>	MEDIUM
<b>HANDLE</b>	PATTI HANDLE X 1
<b>HANDLE POSITION</b>	HORIZONTAL
<b>HINGES</b>	-
<b>3 INCH WHEEL, 2 WITH LOCK, 2 WITHOUT LOCK</b>	-
<b>RUBBER FEET</b>	-

# PIONEER XDJ RR

*Flight Cases*



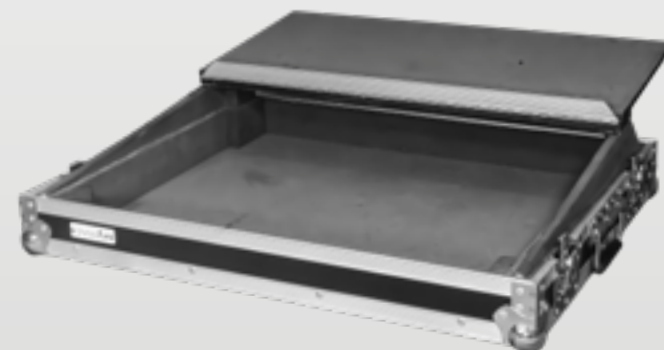
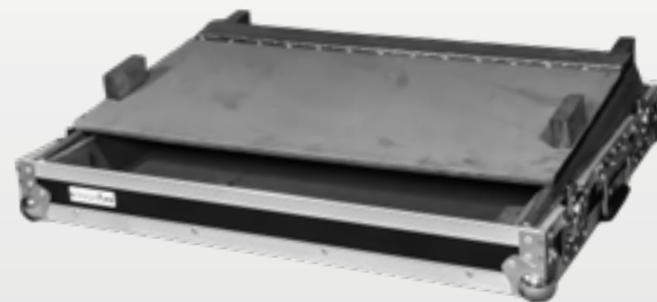
## PIONEER XDJ RR

<b>PLYWOOD</b>	9MM CUSTOMISED PLYWOOD
<b>ALLUMINIUM L CHANNEL</b>	25X25MM
<b>8 X BALL CORNER</b>	MEDIUM BALL CORNER
<b>LATCH</b>	SMALL
<b>HANDLE</b>	PATTI HANDLE X 1
<b>HANDLE POSITION</b>	HORIZONTAL
<b>HINGES</b>	-
<b>3 INCH WHEEL, 2 WITH LOCK, 2 WITHOUT LOCK</b>	-
<b>RUBBER FEET</b>	-



# PIONEER XDJ RR WITH LAPTOP

*Flight Cases*



## **PIONEER XDJ RR WITH LAPTOP**

<b>PLYWOOD</b>	9MM CUSTOMISED PLYWOOD
<b>ALLUMINIUM L CHANNEL</b>	25X25MM
<b>8 X BALL CORNER</b>	MEDIUM BALL CORNER
<b>LATCH</b>	SMALL
<b>HANDLE</b>	PATTI HANDLE X 1, SPRING HANDLE X 2
<b>HANDLE POSITION</b>	HORIZONTAL
<b>HINGES</b>	-
<b>3 INCH WHEEL, 2 WITH LOCK, 2 WITHOUT LOCK</b>	-
<b>RUBBER FEET</b>	-

# PIONEER DDJ FLX 4

*Flight Cases*

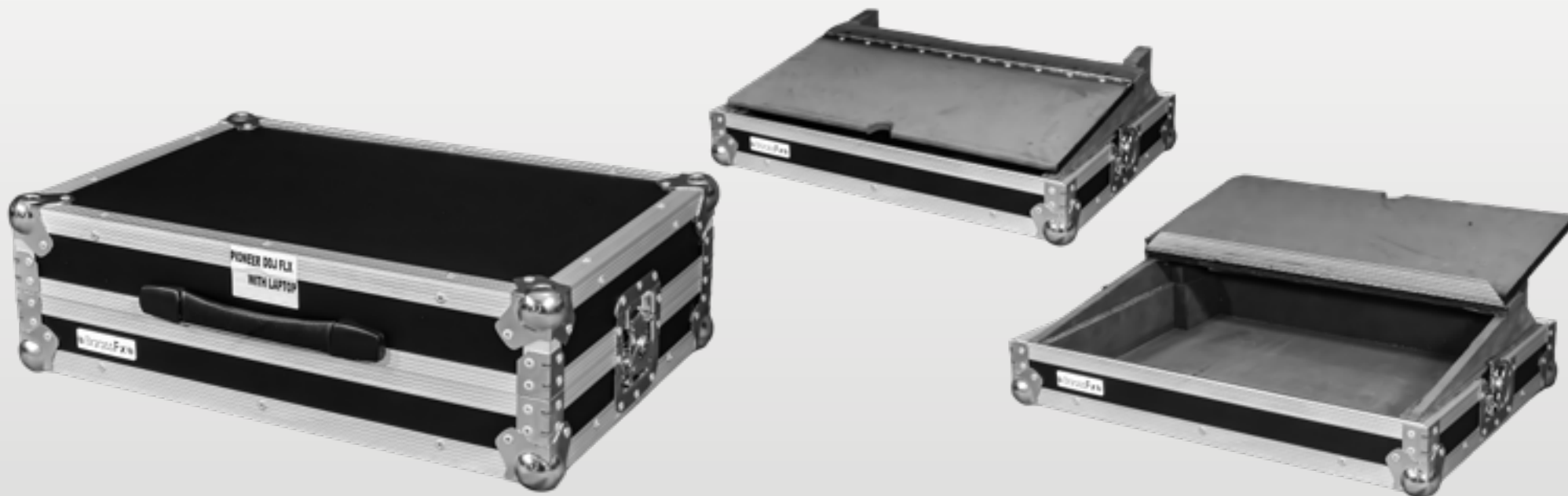


## PIONEER DDJ FLX 4

<b>PLYWOOD</b>	9MM CUSTOMISED PLYWOOD
<b>ALLUMINIUM L CHANNEL</b>	25X25MM
<b>8 X BALL CORNER</b>	MEDIUM BALL CORNER
<b>LATCH</b>	MEDIUM
<b>HANDLE</b>	PATTI HANDLE X 1
<b>HANDLE POSITION</b>	HORIZONTAL
<b>HINGES</b>	-
<b>3 INCH WHEEL, 2 WITH LOCK, 2 WITHOUT LOCK</b>	-
<b>RUBBER FEET</b>	-

# PIONEER DDJ FLX 4 WITH LAPTOP

*Flight Cases*

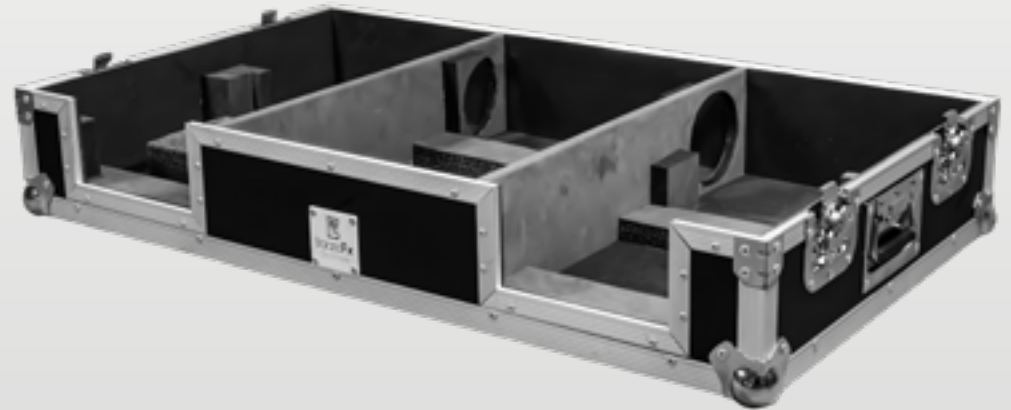


## **PIONEER DDJ FLX 4 WITH LAPTOP**

<b>PLYWOOD</b>	9MM CUSTOMISED PLYWOOD
<b>ALLUMINIUM L CHANNEL</b>	25X25MM
<b>8 X BALL CORNER</b>	MEDIUM BALL CORNER
<b>LATCH</b>	MEDIUM
<b>HANDLE</b>	PATTI HANDLE X 1
<b>HANDLE POSITION</b>	HORIZONTAL
<b>HINGES</b>	-
<b>3 INCH WHEEL, 2 WITH LOCK, 2 WITHOUT LOCK</b>	-
<b>RUBBER FEET</b>	-

# DJ MIXER CASE (CDJ350+NUMARK M6+CDJ350)

*Flight Cases*



## **DJ MIXER CASE (CDJ350+NUMARK M6+CDJ350)**

<b>PLYWOOD</b>	9MM CUSTOMISED PLYWOOD
<b>ALLUMINIUM L CHANNEL</b>	25X25MM
<b>8 X BALL CORNER</b>	MEDIUM BALL CORNER
<b>LATCH</b>	MEDIUM
<b>HANDLE</b>	TRAY HANDLE X 2
<b>HANDLE POSITION</b>	HORIZONTAL
<b>HINGES</b>	-
<b>3 INCH WHEEL, 2 WITH LOCK, 2 WITHOUT LOCK</b>	-
<b>RUBBER FEET</b>	-

# 4 PCS PAR LIGHT

*Flight Cases*



## 4 PCS PAR LIGHT

<b>PLYWOOD</b>	9MM CUSTOMISED PLYWOOD
<b>ALLUMINIUM L CHANNEL</b>	27X27MM
<b>8 X BALL CORNER</b>	MEDIUM BALL CORNER
<b>LATCH</b>	MEDIUM
<b>HANDLE</b>	TRAY HANDLE X 4
<b>HANDLE POSITION</b>	HORIZONTAL
<b>HINGES</b>	HINGES X 2
<b>3 INCH WHEEL, 2 WITH LOCK, 2 WITHOUT LOCK</b>	-
<b>RUBBER FEET</b>	-

# 6 PCS PAR LIGHT

*Flight Cases*



## 6 PCS PAR LIGHT

<b>PLYWOOD</b>	9MM CUSTOMISED PLYWOOD
<b>ALLUMINIUM L CHANNEL</b>	27X27MM
<b>8 X BALL CORNER</b>	MEDIUM BALL CORNER
<b>LATCH</b>	MEDIUM
<b>HANDLE</b>	TRAY HANDLE X 2
<b>HANDLE POSITION</b>	HORIZONTAL
<b>HINGES</b>	HINGES X 3
<b>3 INCH WHEEL, 2 WITH LOCK, 2 WITHOUT LOCK</b>	-
<b>RUBBER FEET</b>	-

# 8 MIKE

*Flight Cases*



## 8 MIKE

PLYWOOD	9MM CUSTOMISED PLYWOOD
ALLUMINIUM L CHANNEL	25X25MM
8 X BALL CORNER	MEDIUM BALL CORNER
LATCH	SMALL
HANDLE	PATTI HANDLE X 1
HANDLE POSITION	HORIZONTAL
HINGES	HINGES X 2
3 INCH WHEEL, 2 WITH LOCK, 2 WITHOUT LOCK	-
RUBBER FEET	-

# 12MIKE

*Flight Cases*



## 12MIKE

<b>PLYWOOD</b>	9MM CUSTOMISED PLYWOOD
<b>ALLUMINIUM L CHANNEL</b>	25X25MM
<b>8 X BALL CORNER</b>	MEDIUM BALL CORNER
<b>LATCH</b>	MEDIUM
<b>HANDLE</b>	TRAY HANDLE X 2
<b>HANDLE POSITION</b>	HORIZONTAL
<b>HINGES</b>	HINGES X 2
<b>3 INCH WHEEL, 2 WITH LOCK, 2 WITHOUT LOCK</b>	-
<b>RUBBER FEET</b>	-



# 16 MIKE

*Flight Cases*



## 16 MIKE

<b>PLYWOOD</b>	9MM CUSTOMISED PLYWOOD
<b>ALLUMINIUM L CHANNEL</b>	25X25MM
<b>8 X BALL CORNER</b>	MEDIUM BALL CORNER
<b>LATCH</b>	MEDIUM
<b>HANDLE</b>	TRAY HANDLE X 2
<b>HANDLE POSITION</b>	HORIZONTAL
<b>HINGES</b>	HINGES X 2
<b>3 INCH WHEEL, 2 WITH LOCK, 2 WITHOUT LOCK</b>	-
<b>RUBBER FEET</b>	-

# 14MIKE AND CABLE FLIGHT CASE

*Flight Cases*



## 14MIKE AND CABLE FLIGHT CASE

<b>PLYWOOD</b>	9MM CUSTOMISED PLYWOOD
<b>ALLUMINIUM L CHANNEL</b>	25X25MM
<b>8 X BALL CORNER</b>	MEDIUM BALL CORNER
<b>LATCH</b>	MEDIUM
<b>HANDLE</b>	TRAY HANDLE X 4
<b>HANDLE POSITION</b>	HORIZONTAL
<b>HINGES</b>	HINGES X 2
<b>3 INCH WHEEL, 2 WITH LOCK, 2 WITHOUT LOCK</b>	-
<b>RUBBER FEET</b>	-

# SM-XR-40 FLIGHT CASE

*Flight Cases*



## SM-XR-40 FLIGHT CASE

PLYWOOD	9MM CUSTOMISED PLYWOOD
ALLUMINIUM L CHANNEL	25X25MM
8 X BALL CORNER	MEDIUM BALL CORNER
LATCH	SMALL
HANDLE	PATTI HANDLE X 1
HANDLE POSITION	HORIZONTAL
HINGES	HINGES X 2
3 INCH WHEEL, 2 WITH LOCK, 2 WITHOUT LOCK	-
RUBBER FEET	-

# VRX932

*Flight Cases*



## VRX932

<b>PLYWOOD</b>	9MM CUSTOMISED PLYWOOD
<b>ALLUMINIUM L CHANNEL</b>	27X27MM
<b>8 X BALL CORNER</b>	BIG BALL CORNER
<b>LATCH</b>	MEDIUM
<b>HANDLE</b>	TRAY HANDLE X 4
<b>HANDLE POSITION</b>	HORIZONTAL
<b>HINGES</b>	-
<b>3 INCH WHEEL, 2 WITH LOCK, 2 WITHOUT LOCK</b>	4
<b>RUBBER FEET</b>	-

# 10U FLIGHT CASE 24" M MARK

*Flight Cases*



## 10U FLIGHT CASE 24" M MARK

<b>PLYWOOD</b>	9MM CUSTOMISED PLYWOOD
<b>ALLUMINIUM L CHANNEL</b>	27X27MM
<b>8 X BALL CORNER</b>	big BALL CORNER
<b>LATCH</b>	MEDIUM
<b>HANDLE</b>	TRAY HANDLE X 4
<b>HANDLE POSITION</b>	HORIZONTAL
<b>HINGES</b>	-
<b>3 INCH WHEEL, 2 WITH LOCK, 2 WITHOUT LOCK</b>	4
<b>RUBBER FEET</b>	-

# AHUJA AMP 1000

*Flight Cases*



## AHUJA AMP 1000

<b>PLYWOOD</b>	9MM CUSTOMISED PLYWOOD
<b>ALLUMINIUM L CHANNEL</b>	25X25MM
<b>8 X BALL CORNER</b>	MEDIUM BALL CORNER
<b>LATCH</b>	MEDIUM
<b>HANDLE</b>	TRAY HANDLE X 2
<b>HANDLE POSITION</b>	HORIZONTAL
<b>HINGES</b>	-
<b>3 INCH WHEEL, 2 WITH LOCK, 2 WITHOUT LOCK</b>	-
<b>RUBBER FEET</b>	4

# AHUJA AMP 500

*Flight Cases*



## AHUJA AMP 500

PLYWOOD	9MM CUSTOMISED PLYWOOD
ALLUMINIUM L CHANNEL	25X25MM
8 X BALL CORNER	MEDIUM BALL CORNER
LATCH	MEDIUM
HANDLE	HANDLE X 2
HANDLE POSITION	HORIZONTAL
HINGES	-
3 INCH WHEEL, 2 WITH LOCK, 2 WITHOUT LOCK	-
RUBBER FEET	4

# AHUJA AMP 250

*Flight Cases*



## **AHUJA AMP 250**

<b>PLYWOOD</b>	9MM CUSTOMISED PLYWOOD
<b>ALLUMINIUM L CHANNEL</b>	25X25MM
<b>8 X BALL CORNER</b>	MEDIUM BALL CORNER
<b>LATCH</b>	MEDIUM
<b>HANDLE</b>	HANDLE X 2
<b>HANDLE POSITION</b>	HORIZONTAL
<b>HINGES</b>	-
<b>3 INCH WHEEL, 2 WITH LOCK, 2 WITHOUT LOCK</b>	-
<b>RUBBER FEET</b>	4



# 12U FLIGHT CASE M MARK

*Flight Cases*



## 12U FLIGHT CASE M MARK

<b>PLYWOOD</b>	9MM CUSTOMISED PLYWOOD
<b>ALLUMINIUM L CHANNEL</b>	27X27MM
<b>8 X BALL CORNER</b>	big BALL CORNER
<b>LATCH</b>	MEDIUM
<b>HANDLE</b>	TRAY HANDLE X 4
<b>HANDLE POSITION</b>	HORIZONTAL
<b>HINGES</b>	-
<b>3 INCH WHEEL, 2 WITH LOCK, 2 WITHOUT LOCK</b>	4
<b>RUBBER FEET</b>	-

# CORDLESS MIKE WITH METAL DRAWER

*Flight Cases*



## CORDLESS MIKE WITH METAL DRAWER

PLYWOOD	9MM CUSTOMISED PLYWOOD
ALLUMINIUM L CHANNEL	27X27MM
8 X BALL CORNER	MEDIUM BALL CORNER
LATCH	MEDIUM
HANDLE	TRAY HANDLE X 2
HANDLE POSITION	HORIZONTAL
HINGES	-
3 INCH WHEEL, 2 WITH LOCK, 2 WITHOUT LOCK	-
RUBBER FEET	-



Plot 57, Phase 3, Kakoda Industrial Estate Kakoda, Curchorem - Goa 403706