



Leaders In Sounds Application And Installations

LMH SERIES

LASTING MUSIC HARMONICS



LESS COMPLEXITY... MORE COMPACT... HIGHEST VALUE

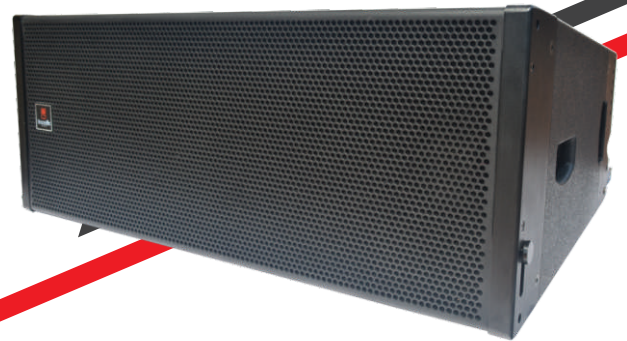
Premium Range Of Textured Pro Audio Enclosers | **2 Years Of Warranty***

LMH - BFX 212

The LMH-BFX212 is a 3 way line array loudspeaker system which is engineered to exceptional performance from the line array to enhance live sound and a variety of sound installations. It is compact in size yet is packed with a full bandwidth system. It can be used without the subwoofer for certain applications too. It is a versatile and scalable system that can be flown or ground stacked for wide range of events. It can be complimented with BFXSUB 218, subwoofer for exceptional low frequency extension.

FEATURES

- Max performance three-way full-range line array system.
- European drivers for superior quality and durability.
- 2 x 12 inch high performance neo woofers in bass reflex design.
- New 2 x 8 inch slot-loaded mid design.
- 2 x 1.4 inch neo compression driver, horn-loaded for power and performance.
- 16 ohms low, mid and high frequency sections.
- Wide bandwidth, extended bass response.
- Wide coverage 120° horizontal.
- Quick, central and high-strength rigging system.
- Common frame grid can be used for stacking (ground) or flying options.
- Company presets (crossover design) for a variety of applications.



LMH - BFX 218

The BFX 218 is a max performance dual 18 inch twin subwoofer which is compact yet delivers powerful output and gives volume twice that of the already successful BFX 118 woofer. A derivative of the BFX 118, the BFX 218 design utilizes the unique double Sub-bass reflect cabinet construction with two European designed woofers to ensure the head turning and chest thumping low frequency, extremely long term power handling and reliability in all applications but without the time delay and weight problems usually associated with conventional designs.

FEATURES:

- High efficiency and High output design.
- Outstanding power to size ratio
- Dual Vented horn subwoofer system with long throw capability
- Dual 18 inch very-high excursion, high power
- Frequency range 35Hz-150Hz
- Enclosure is stackable in both Horizontal and vertical Orientations



SPECIFICATIONS:

LMH - BFX 212

TYPE
FREQUENCY
RANGEDRIVERS
LF
HF
RATED POWER
SENSITIVITYMAX SPL (CAL @ 1M)
NOMINAL IMPEDANCE
DISPERSION (-6db)
ENCLOSURE
EXTERIOR FINISH
PROTECTIVE GRILL
CONNECTORS
DIMENSIONS
WEIGHT

Three-way, compact line array component
55Hz-18kHz
2 x 12 inch woofer, reflex loaded
2x 8 inch midrange, horn loaded
2 x 1.4 inch exit HF compression drivers, horn loaded
LF: 800W AES,3200W peak
MHF: 500W AES, 2000W peak
LF: 101 dB | MHF: 108dB
LF: 136dB | MHF: 141dB
LF:8 ohms | MHF: 8 ohms
80° horizontal x 10° vertical
Vertical trapezoid ,premium Birch plywood construction
SandTex premium weather resistant paint
Perforated Steel Powder Coated, 16G.
2 x Speakon Connector Pins
866 mm x 341 mm x 542 mm (W x H x D)
45 kg

LMH - BFX 218

Front loaded Subwoofer
35Hz-150 Hz
2 x 18 inch front loaded
2400W AES, 8000W peak
106dB
145dB
4 ohms

Rectangular , premium Birch plywood construction
BaassFx Sandtex premium weather resistant paint cover
Perforated Steel Powder Coated, 16G.
2 x Speakon Connector Pins
1200 mm x 545 mm x 780 mm (W x H x D)
86 kg

The BFX 112 is a compact line array loudspeaker module. It is powered externally by 2-way passive speaker which integrates mid and high frequency transducers in a single unit. The BFX 112 uses highest quality

European class drivers which provide optimal performance. It is a compact coupled with user friendly technology. Mid-bass frequency reproduction is taken care by single 12 inch 400W BaassFx neo sound woofer in bass reflex configuration. This high power and high excursion 12 inch woofer has been specially built for the BFX 112 to ensure hard-hitting low-frequency and excellent mid frequency performance. For High frequencies 1.4 inch exit compression driver are mounted on plane wave converters.



FEATURES

- High performance two-way full-range line array system.
- Very high output coupled with clean and precise sound reproduction.
- Passive operation.
- European drivers for superior performance and durability.
- 12 inch 400W high performance neo woofer in bass reflex design
- 1.4 inch compression driver, for power and performance
- Wide bandwidth and extended bass response
- Wide coverage 120° horizontal
- Common fly frame may be used for flying or ground stacking
- Fast, Integral, high-strength rigging system
- Company presets (crossover designed) for a variety of applications

The BFX 118 is a high performance single 18 inch front loaded subwoofer is an extremely compact subwoofer. Vented-box advantages take over for the lowest octave and assist in producing exceptionally high levels of clean, punchy bass from a modest-sized box.

A specialized 18 inch 1200W woofer is loaded to ensure chest-kicking low frequency, extremely long term power handling and reliability in all applications. When used with the BFX 112, the BFX 118 provides high-output sound underpinning for clubs, large halls, or outdoor events in a compact package which can be moved easily by a single person crew.

LMH - BFX 118



FEATURES:

- Compact design High-Output front loaded subwoofer system with long throw capability
- 18 inch very-high excursion, high power European bass driver
- Frequency range 35Hz-150Hz • 8 ohm nominal impedance.
- Easy hanging provision provided for BFX 118 makes it versatile.
- The base has flying bracket arrangement. This is uniquely created to give flexibility of setup.
- It can used to deliver extremely low frequency from top of line array.

SPECIFICATIONS:

LMH - BFX 112

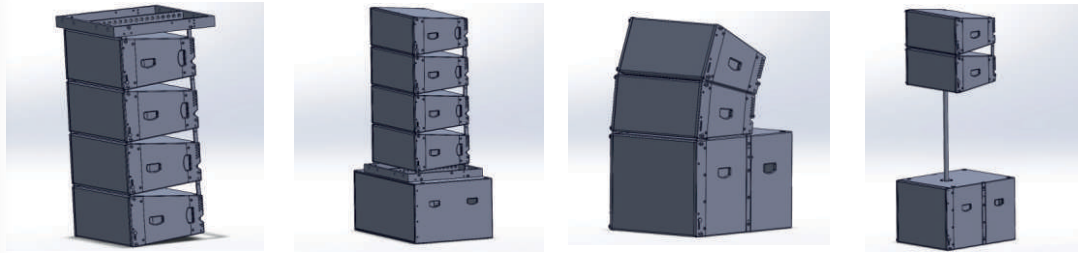
TYPE	Two-way, compact line array element
FREQUENCY	55Hz-18kHz
RANGEDRIVERS	1 x 12 inch woofer, reflex loaded
LF	1.4 inch exit HF compression drivers, horn loaded
HF	LF: 400W AES, 1600W peak
RATED POWER	HF: 120W AES, 480W peak
SENSITIVITYMAX SPL (CAL @ 1M)	98 dB
NOMINAL IMPEDANCE	114dB continuous, 130dB peak
DISPERSION (-6db)	8 ohms
ENCLOSURE	90° horizontal x 12° vertical
EXTERIOR FINISH	Vertical trapezoid, premium Birch plywood construction
PROTECTIVE GRILL	BaassFx Sandtex premium weather resistant paint cover
CONNECTORS	Perforated Steel Powder Coated, 16G.
DIMENSIONS	2 x Speakon connector pin
WEIGHT	635 mm x 320 mm x 461 mm
	24 kg (this is N.W)

LMH - BFX 118

TYPE	Front loaded Subwoofer
FREQUENCY	35Hz-150Hz
RANGEDRIVERS	1 x 18 inch loaded
LF	1200W AES, 4000W peak
HF	103dB
RATED POWER	139dB
SENSITIVITYMAX SPL (CAL @ 1M)	8 ohms
NOMINAL IMPEDANCE	
DISPERSION (-6db)	
ENCLOSURE	Rectangular, premium Birch plywood construction
EXTERIOR FINISH	BaassFx Sandtex premium weather resistant paint cover
PROTECTIVE GRILL	Perforated Steel Powder Coated, 16G.
CONNECTORS	2 x Speakon Connector Pins
DIMENSIONS	635 mm x 545 mm x 806 mm (W x H x D)
WEIGHT	56 kg



STACKING OPTION



GENERAL FEATURES



Light
Chemical
Resistant



Low
VOC



Non Toxic



Resistant to
Scratch and
Abrasion



Impact
Resistant



Water
Resistant



Texture
Effects

APPLICATIONS –

- Ideal for all kind of handy applications • Medium to large scale sound underpinning
- Can be used at concert halls, stadiums and auditoriums • Ideal for live shows and orchestra
- Best for a wide range of portable applications and installs.
- Small to medium scale sound reinforcement.
- Use as delay systems for large scale outdoor sound reinforcement e.g. (LMH BFX 212)
- Live Sound (Medium to Large scale sound reinforcement) • Auditorium
- Houses of Worship • Club sound
- Concert Halls • Stadiums



BAASSFX OFFICES

Pune Office:

BaassFx (Pune) Jedhe Park, Shop No.28, 248-12 Near Hotel Shantai Rastha Peth Pune Maharashtra - 411 002, Code: 27
e-mail: info@baassfx.in

Manufacturing Unit:

BaassFx Plot No.57 Phase III, Kakoda Industrial Estate Goa
India Pin Code: 403704